

**LEGEND**

- 3 BED APARTMENT
- 2 BED APARTMENT
- 1 BED APARTMENT
- COMMUNITY USE
- COMMERCIAL USE
- RESIDENTIAL AMENITY
- ANCILLARY USES

**NOTES**

TOTAL NO. APARTMENTS: 350  
 19 NO. 3 BED [5%]  
 218 NO. 2 BED [62%]  
 113 NO. 1 BED [32%]

DUAL ASPECT RATIO : 53%  
 NO SINGLE ASPECT NORTH FACING UNITS

**SCHEDULE OF AREAS:**

SITE AREA: 1.5 HA  
 COMMUNAL OPEN SPACE: 3122 m<sup>2</sup>  
 PUBLIC OPEN SPACE: 1915 M<sup>2</sup> (c.13%)

**PARKING SCHEDULE**

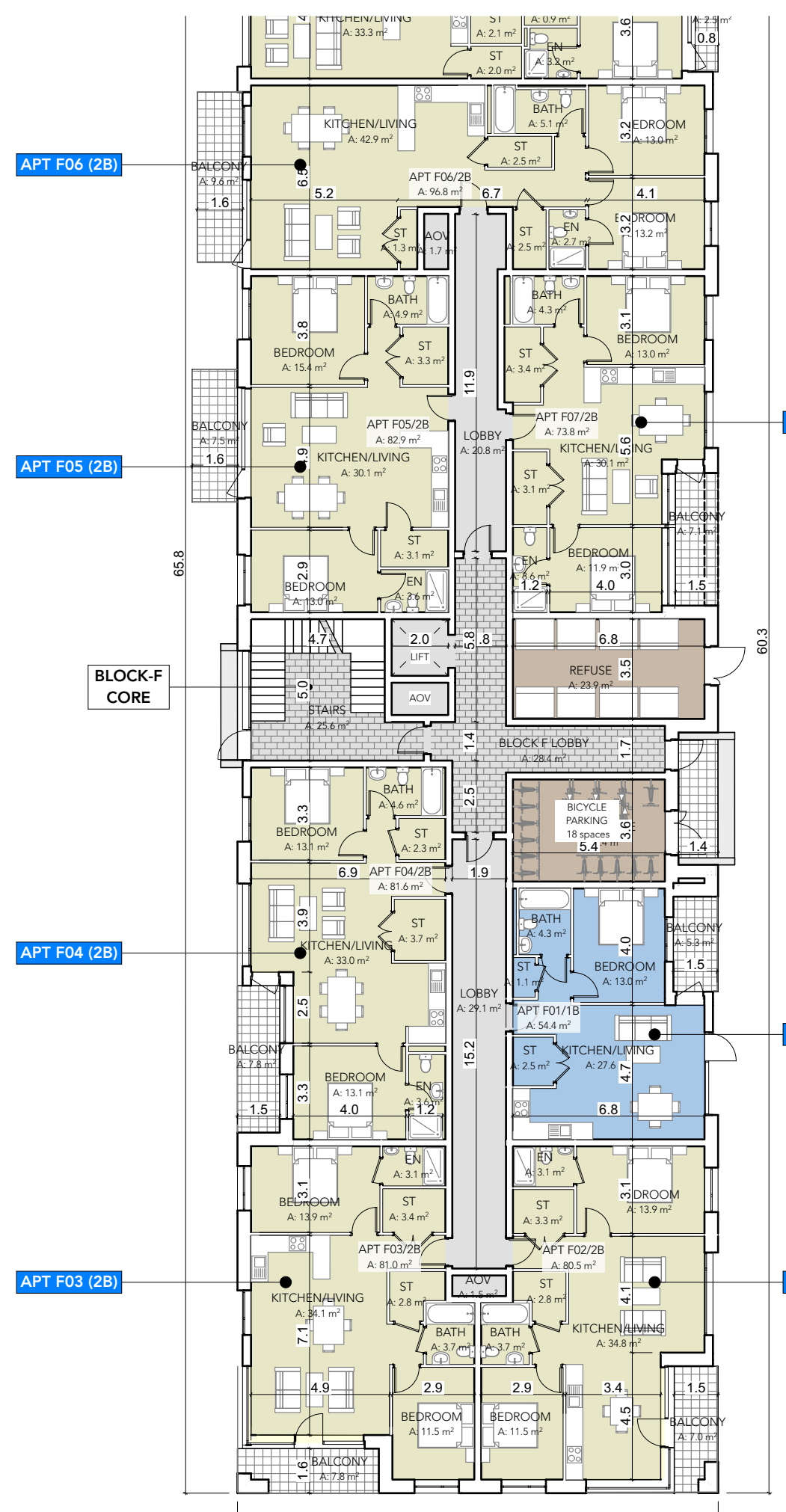
**BICYCLE PARKING**  
 TOTAL NO. SPACES 805  
 763 LONG TERM(719 BASEMENT)  
 42 VISITOR

**CAR PARKING:**  
 209 TOTAL NO. SPACES  
 36 NO. SURFACE PARKING  
 SPACES ( NOTE 4 NO. CAR CLUB, 5 SET DOWN)  
 173. NO. BASEMENT

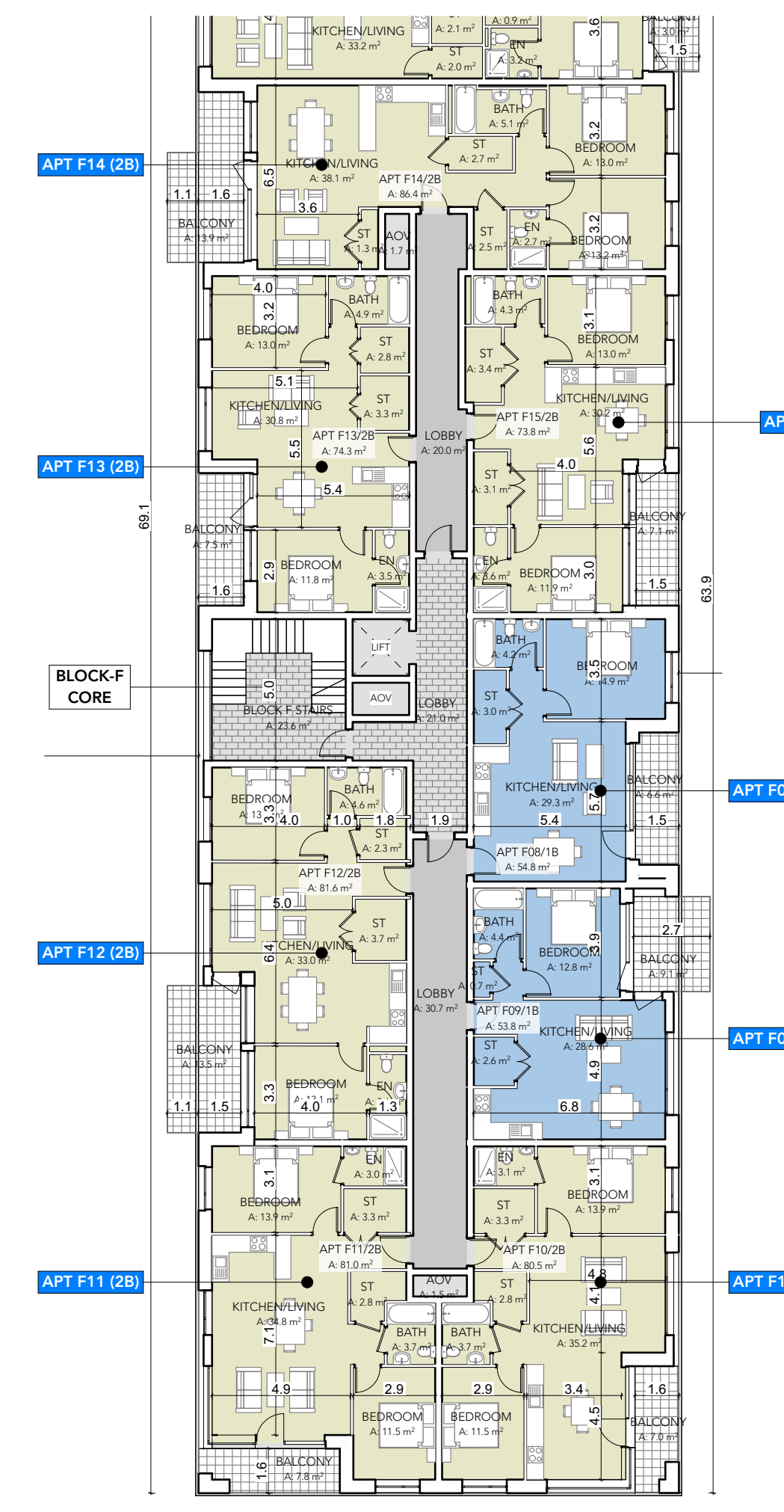
**KEY PLAN**

UNITS PROPOSED FOR PART V

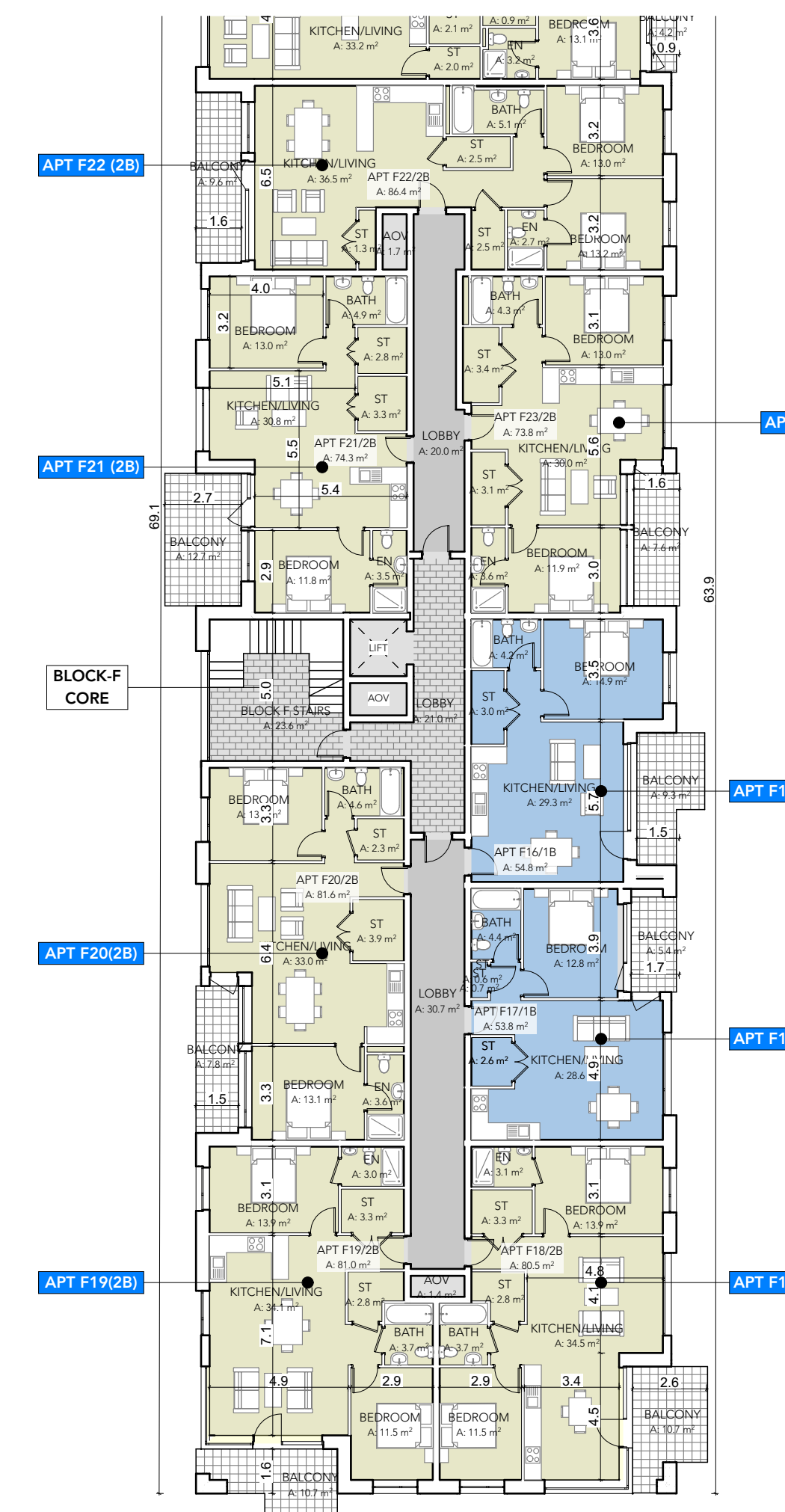
**PART V SCHEDULE**  
 35 NO. APARTMENTS  
 ( 9 X 1BEDS, 26 X 2BEDS)



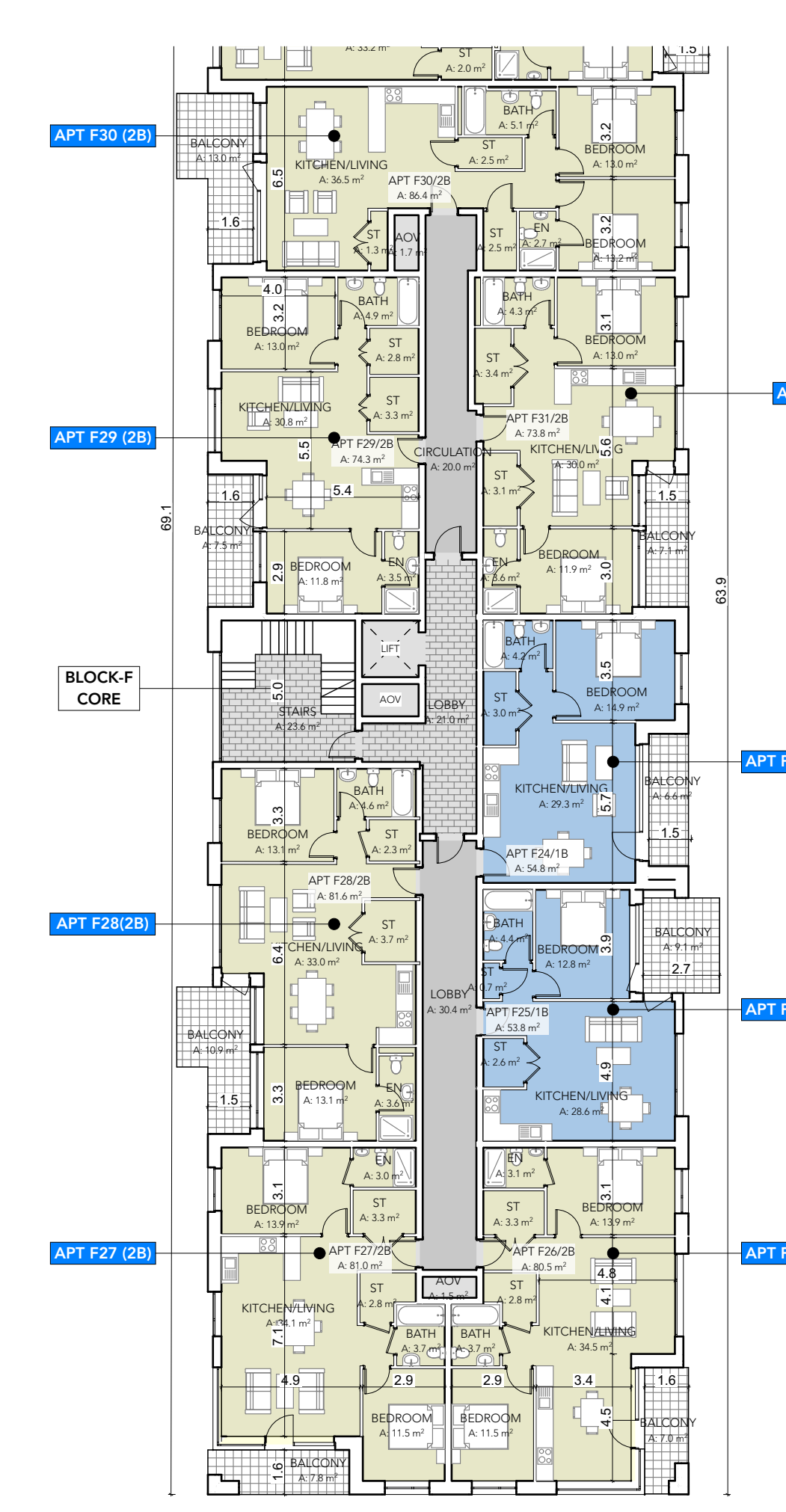
Ground Floor Plan  
SCALE: 1:200



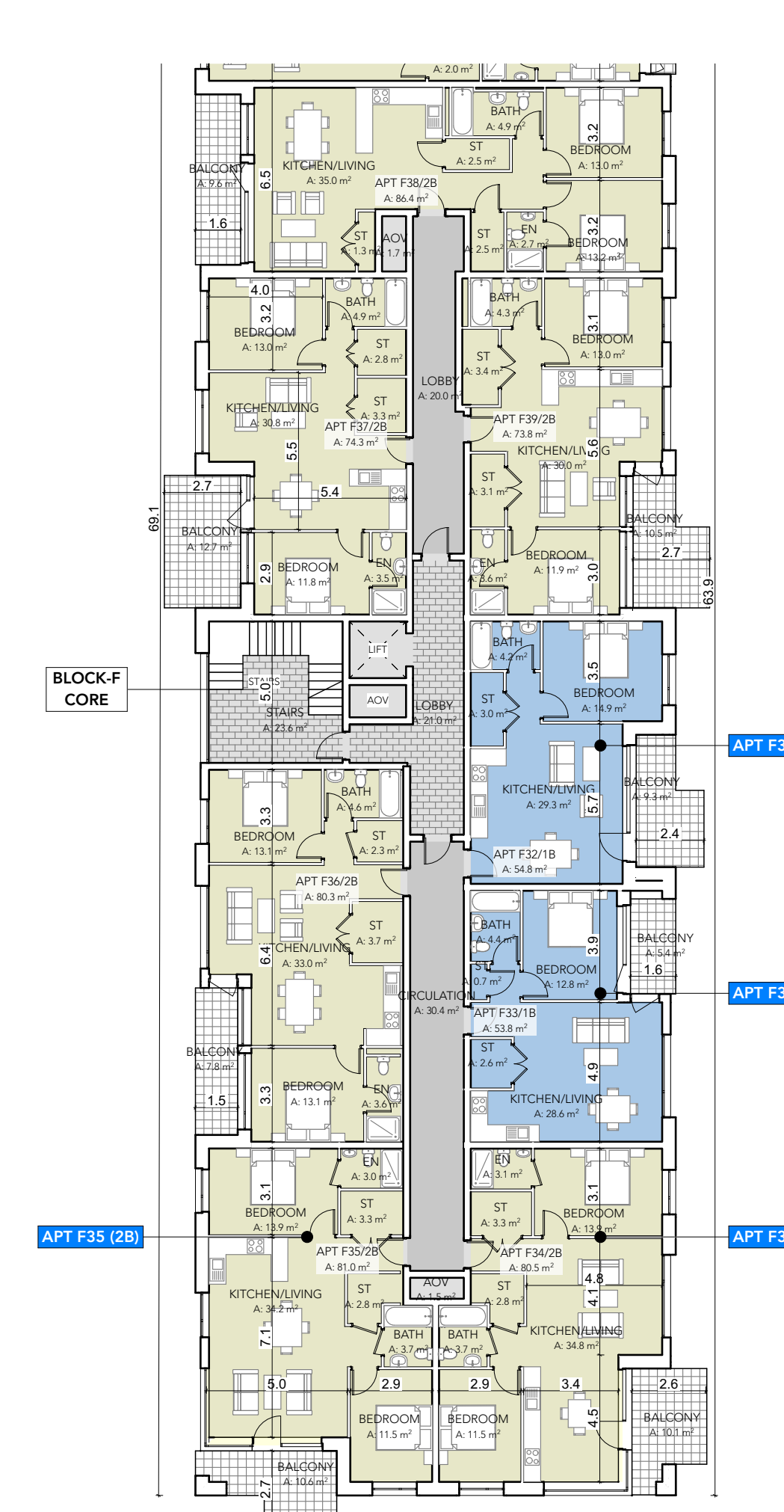
First Floor Plan  
SCALE: 1:200



Second Floor Plan  
SCALE: 1:200



Third Floor Plan  
SCALE: 1:200



Fourth Floor Plan  
SCALE: 1:200